



& ASSOCIATES, INC.

heat tracing specialists



E55-400

LINE SENSING THERMOSTAT

Controls



E55-E22BC



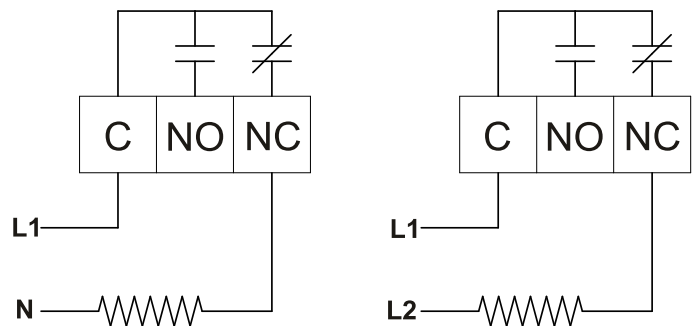
Description

The E55-400 is a remote line sensing thermostat used for heat trace applications typically where process temperatures are maintained. It is suitable for use in ordinary locations and where corrosive materials are present. It is a NEMA 4X rated cast aluminum enclosure with a protective cap over the adjusting dial. Even at 480VAC, it has a robust contact rating of 22 Amps which makes it more than capable of handling multiple circuits of heat trace or high watt density heating cables. Its size makes it ideal for cramped locations and provides an exceptional value for its features.

Specifications

Enclosure: NEMA 4X Die Cast Aluminum Epoxy Coated
Set-Point Range: 50°F - 400°F (10°C - 204°C)
Bulb Exposure: -40°F - 600°F (-40°C - 315°C)
Capillary Length/Type: 10' 304SS
Switch Type: SPDT
Contact Rating: 22A@110V-480V/1,000,000 cycles
Accuracy: ± 1% of range
Differential: Typ. 1% of range
Weight: 1 Lb.

Wiring Diagram

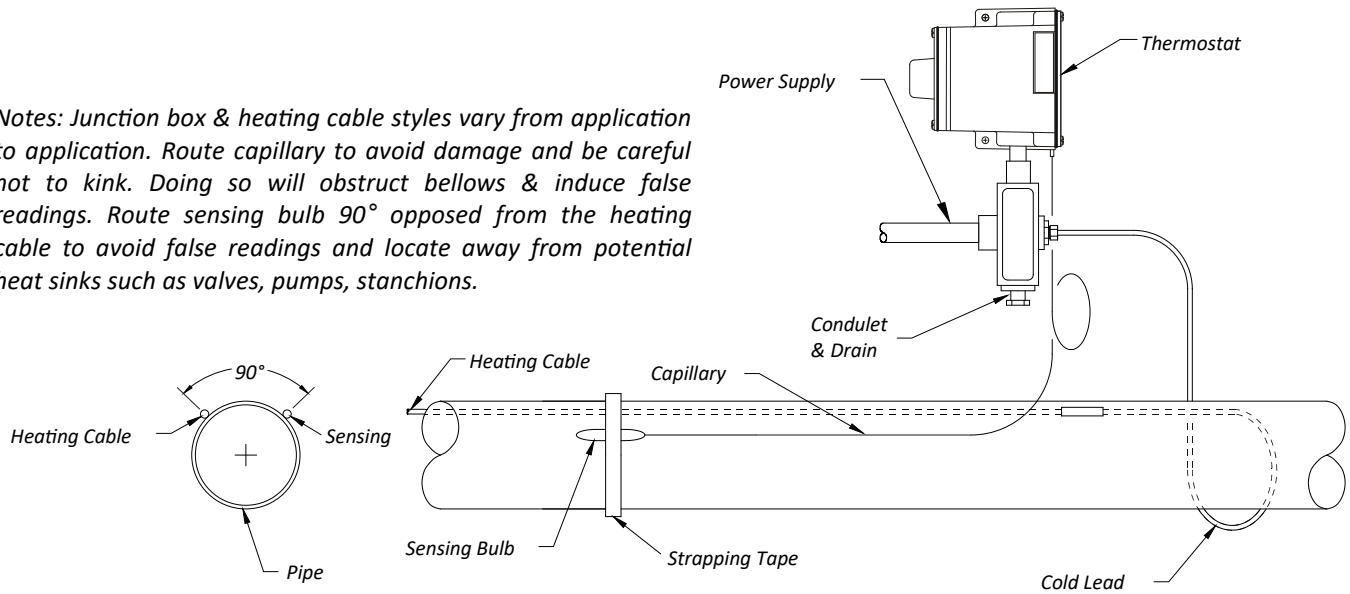


TAD & Associates, Inc.
8534 El Camino Court
San Antonio, Texas 78254-1858

Phone: 210.679.8447
Fax: 210.679.8847
<http://www.tad-associates.com>

Typical Installation

Notes: Junction box & heating cable styles vary from application to application. Route capillary to avoid damage and be careful not to kink. Doing so will obstruct bellows & induce false readings. Route sensing bulb 90° opposed from the heating cable to avoid false readings and locate away from potential heat sinks such as valves, pumps, stanchions.



Dimensions

