



& ASSOCIATES, INC.

heat tracing specialists



HTM-1250

HEAT TRANSFER CEMENT

Accessories



Description

HTM-1250 heat transfer cement is designed to significantly improve the heat transfer between tracers and process lines. Heat transfer cement thermally bonds steam and electric heat tracers to process pipes, valves, pumps and other equipment. HTM-1250 fills the air cavities that normally exist between the heat tracer and process equipment with heat conductive, thermal mastic that efficiently transfers heat through conduction to the process equipment. By replacing the normal air gaps with the heat conductive cement, the heat transfer rates are improved by up to 10 times that of convective heat transfer.

Ratings

Maximum Exposure Temperature: **1250°F**
Minimum Application Temperature: **32°F**
Heat Transfer Coefficient: **20-40 BTU/Hr-Ft²F**

Soluble in Water: **YES**
Shelf Life: **1 Year Unopened**

TAD & Associates, Inc.
P.O. Box 2170
Canyon Lake, Texas 78133

Phone: 830.964.4435
Fax: 830.964.4441
<http://www.tad-associates.com>

Ordering Information

Example Configuration	HTM-1250-5	
HTM-1250	Container Size	Weight
Heat Transfer Cement	1=One Gallon	13 Lbs.
	5=Five Gallon	65 Lbs.
	Q=Quart	3.5 Lbs.
	C=0.10 Gallon Cartridge	1.3 Lbs.

Accessories

CH-2	Channel for 1/2" Tracer (4' section)
CH-3	Channel for 3/4" Tracer (4' section)
CH-4	Channel for 1/4" Tracer (4' section)
SSB-1	Stainless Steel 1/2" x 0.02" Banding (823'/Roll)
SSCR-1	Stainless Crimp Seals for Banding (1,000/Box)
BT-1	Banding Tool for Stainless Steel Banding

Coverage Rates

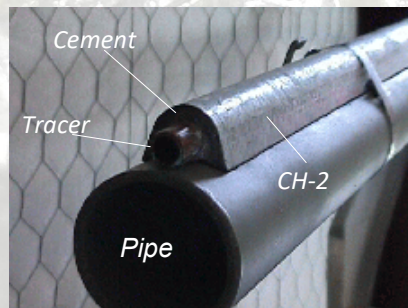
Application Method	Tracer Sizes				
	5/16" OD	3/8" OD	1/2" OD	3/4" OD	1" OD
CH-2	26'	28'	32'	NA	
CH-3	NA			19'	NA
Hand Trowel	52'	32'	28'	14'	9'
Flat Surface	1 Gallon = 6 ft. ² (1/4" Thick), 12 ft. ² (1/8" Thick)				

Features

- Thermally bonds steam, fluid, and electric heat tracers to process pipes, vessels and equipment.
- With its high conductivity, significantly improves heat transfer between steam and fluid tracer tubes and process pipes.
- Provides an easy to install, cost effective alternative to jacketed piping and internal tracer systems.
- One tracer installed with HTM-1250 will deliver the equivalent heat of up to four bare (no cement) tracers. With the elimination of multiple tracers, the costs to install and maintain the tracing system is greatly reduced.



Typical hand trowel application



Optional channel reduces waste, weather protects and eliminates curing requirements

