



& ASSOCIATES, INC.

heat tracing specialists



## HTM-750

### HEAT TRANSFER CEMENT

Accessories



#### Description

HTM-750 heat transfer cement is designed to significantly improve the heat transfer between tracers and process lines. Heat transfer cement thermally bonds steam and electric heat tracers to process pipes, valves, pumps and other equipment. HTM-750 fills the air cavities that normally exist between the heat tracer and process equipment with heat conductive, thermal mastic that efficiently transfers heat through conduction to the process equipment. By replacing the normal air gaps with the heat conductive cement, the heat transfer rates are improved by up to 10 times that of convective heat transfer.

#### Ratings

Maximum Exposure Temperature: **750°F**  
Minimum Application Temperature: **32°F**  
Heat Transfer Coefficient: **20-40 BTU/Hr-Ft<sup>2</sup>°F**

Soluble in Water: **YES**  
Shelf Life: **1 Year Unopened**

**TAD & Associates, Inc.**  
**P.O. Box 2170**  
**Canyon Lake, Texas 78133**

**Phone: 830.964.4435**  
**Fax: 830.964.4441**  
**<http://www.tad-associates.com>**

## Ordering Information

Example Configuration	HTM-750-1	
HTM-750	Container Size	Weight
Heat Transfer Cement	1=One Gallon	15 Lbs.
	5=Five Gallon	75 Lbs.
	Q=Quart	4 Lbs.
	C=0.10 Gallon Cartridge	1.5 Lbs.

## Accessories

<b>CH-2</b>	Channel for 1/2" Tracer (4' section)
<b>CH-3</b>	Channel for 3/4" Tracer (4' section)
<b>CH-4</b>	Channel for 1/4" Tracer (4' section)
<b>SSB-1</b>	Stainless Steel 1/2" x 0.02" Banding (823'/Roll)
<b>SSCR-1</b>	Stainless Crimp Seals for Banding (1,000/Box)
<b>BT-1</b>	Banding Tool for Stainless Steel Banding

## Coverage Rates

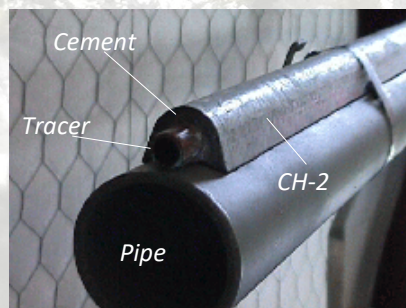
Application Method	Tracer Sizes				
	5/16" OD	3/8" OD	1/2" OD	3/4" OD	1" OD
<b>CH-2</b>	26'	28'	32'	NA	
<b>CH-3</b>	NA			19'	NA
<b>Hand Trowel</b>	52'	32'	28'	14'	9'
<b>Flat Surface</b>	1 Gallon = 6 ft. <sup>2</sup> (1/4" Thick), 12 ft. <sup>2</sup> (1/8" Thick)				

## Features

- Thermally bonds steam, fluid, and electric heat tracers to process pipes, vessels and equipment.
- With its high conductivity, significantly improves heat transfer between steam and fluid tracer tubes and process pipes.
- Provides an easy to install, cost effective alternative to jacketed piping and internal tracer systems.
- One tracer installed with HTM-750 will deliver the equivalent heat of up to four bare (no cement) tracers. With the elimination of multiple tracers, the costs to install and maintain the tracing system is greatly reduced.



Typical hand trowel application



Optional channel reduces waste, weather protects and eliminates curing requirements

