

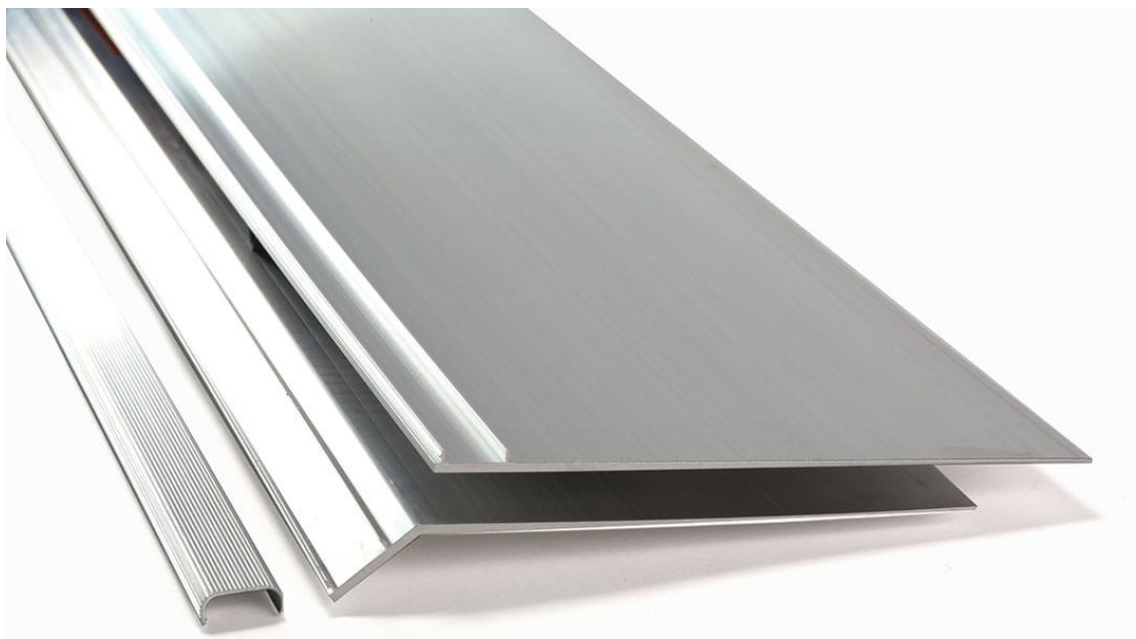


& ASSOCIATES, INC.

heat tracing specialists

Ice Cutter

ROOF & GUTTER DE-ICING SYSTEM



Description

Ice Cutter is an aluminum flashing designed to be used as a heat conductive plate for removal of snow and ice dams atop roofs. It is an alternative to unsightly conventional forms of roof & gutter de-icing. Ice Cutter is to be used in conjunction with industrial grade heating cables and NOT with contractor/residential grade cables. It is an excellent choice for residential, commercial and industrial locations such as homes, apartments, condominiums, resorts, hotels, retail, manufacturing, etc. It is applied between the roofing material and substrate and can be used with various materials such as asphalt shingles, aluminum, steel and even slate. The Ice Cutter system can be applied using various methods, including screws, nails or appropriate adhesives depending on application and materials. It uses significantly less heating cable over conventional systems while offering an aesthetically pleasing alternative.*

* Ice Cutter can be ordered with a 6 mil urethane membrane applied to help prevent galvanic oxidation or corrosion when in contact with dissimilar metals.

Specifications

- 4 Ft. (1.2m) aluminum flashing w/ cap
- 5-1/2" width (14cm) installed under roofing material
- Exposed cap width 3/4" (1.9cm) can be painted to match roof
- 6 mil urethane membrane for use with steel roofs
- 2.7 Lbs./4 Ft. (1.22kg)

Applications

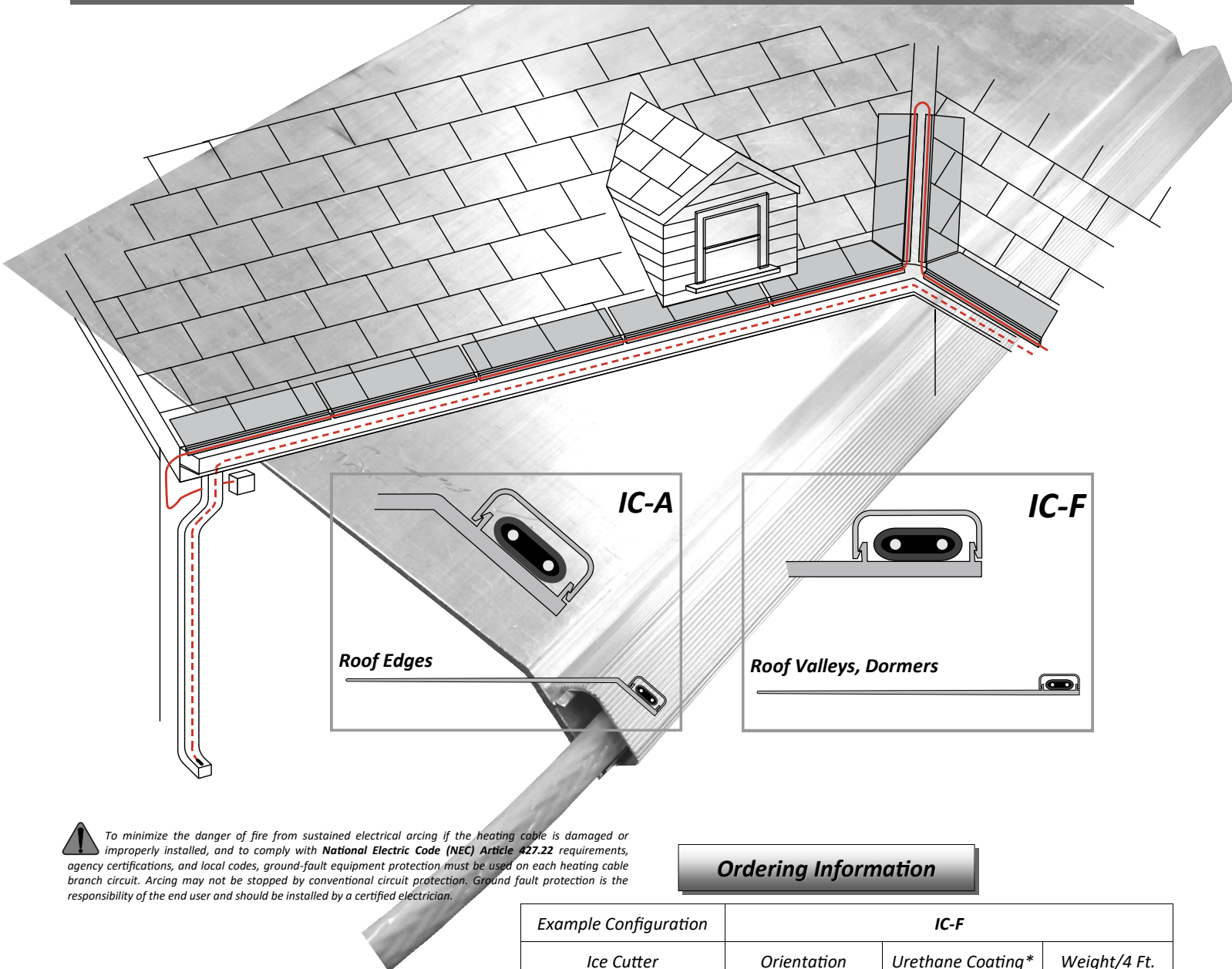
- Residential Buildings (i.e. Homes, Condos, Apartments)
- Resorts, Hotels, Camps
- Commercial Buildings
- Agricultural Locations
- Industrial Buildings (i.e. Distribution, Manufacturing)

TAD & Associates, Inc.
P.O. Box 2170
Canyon Lake, Texas 78133

Phone: 830.964.4435
Fax: 830.964.4441
<http://www.tad-associates.com>

Features

- 4 Ft. tapered aluminum flashing w/ cap
- Flat & angled versions to suit any requirement
- For use with TAD self-regulating or constant wattage
- Provides a protective housing for cable
- Significantly reduces heating cable requirements
- Quick, easy installation
- Cut-to-length
- For new & existing roofs
- Aesthetically pleasing; discrete
- Will not allow heating cable to melt or overheat
- Extremely energy efficient when used with controls
- Holds up under extreme conditions
- Roofing provides protective layer against storm damage
- Engineered & made in North America
- Weatherization incentives available in certain states



! To minimize the danger of fire from sustained electrical arcing if the heating cable is damaged or improperly installed, and to comply with **National Electric Code (NEC) Article 427.22** requirements, agency certifications, and local codes, ground-fault equipment protection must be used on each heating cable branch circuit. Arcing may not be stopped by conventional circuit protection. Ground fault protection is the responsibility of the end user and should be installed by a certified electrician.

Ordering Information

Example Configuration	IC-F		
Ice Cutter	Orientation	Urethane Coating*	Weight/4 Ft.
	F=Flat	S=Steel Roof	2.7 Lbs.
	A=Angled		2.7 Lbs.
* 6 mil urethane membrane is to help prevent galvanic oxidation or corrosion when in contact with dissimilar metals.			

TAD & Associates, Inc. P.O. Box 2170 Canyon Lake, TX 78133 800-755-7602